


**GREENWICH  
THEATRE LONDON**

proudly presents



# THE QUEEN OF HEARTS

WRITTEN BY AND STARRING  
**ANDREW POLLARD**  
WITH ANTHONY SPARGO  
AND "UNCLE" STEVE MARWICK

**OFFIES  
WINNER  
2019**

**FOR BEST  
PANTO**



**FRI 19 NOVEMBER 2021  
- SUN 2 JANUARY 2022**





## Babington House School

Independent Day School from 3 to 18 years

Inspiring Teachers, Inspiring Children



The boys and girls who come to Babington House School receive a first-class education and enjoy coming to school

From Nursery to Sixth Form, pupils flourish, in a caring, nurturing, and academic environment, with small class sizes and inspiring staff.

In our Nursery and Reception classes, we make learning fun. We strive to inspire curious minds with experiences that deepen the mastery of all curriculum areas.

These experiences have led to Babington House Early Years Department being top of the Bromley Borough league tables three years running. This extraordinary achievement is a testament to the positive partnership between our wonderful staff and our super-supportive parents, who together help curious minds grow.

**We look forward to showing you around this outstanding school**

**Find out more:** [www.babingtonhouse.com](http://www.babingtonhouse.com)

Grange Drive, Chislehurst, Kent BR7 5ES  
Telephone: 020 8467 5537 Email: [enquiries@babingtonhouse.com](mailto:enquiries@babingtonhouse.com)

## Welcome

It's been two years since we last presented a pantomime at Greenwich Theatre, and over 20 years since we last missed out on a live festive show at the theatre.

We know that the pandemic presented astonishing challenges for so many industries, bringing businesses to their knees and forcing us all to find new ways of working, but the arts and entertainment sector was surely one of the worst hit. We exist to bring people together, to offer that unique experience of seeing live performers in action - there is nothing like it and no alternative that comes close. Like so many theatres we presented shows online, offered training and mentoring for our artists, enabled our staff to learn new skills, but through it all we were waiting and hoping that we'd get the chance to return to what we do best.

It is undoubtedly true that without the support of our audiences, alongside Arts Council England and Royal Greenwich, the theatre would not have made it through the pandemic, and we are not out of the woods yet. We have a tough year ahead of us as we strive to rebuild what we lost - so if you think you could help in any way at all, from becoming a Friend of the theatre to volunteering front of house, from sharing news of what you've seen with friends or colleagues, to linking your business with us in one way or another, then we'd love to hear from you.

However, we are back, and we could not be more delighted to welcome you, our audiences, back as well for a seasonal treat unlike any other.

Having had a long time to think about the best way to return to Panto, we were all agreed in wanting to present something unusual, something very new and at the same time something that has the whole history and heritage of pantomime at its heart.

Welcome, then, *The Queen of Hearts*, a classic pantomime title from decades past but largely forgotten today. This spectacular show will feature all of the classic Greenwich ingredients that everybody loves, along with a few surprises on stage. It's certainly been a long time coming, but we know you're going to love it!

James Haddrell  
Artistic Director

Simon Francis  
Executive Director

funded by

  
**ROYAL** borough of  
**GREENWICH**





# The Queen of Hearts

By Writer and Director Andrew Pollard

We're back! It's nearly 2 years since we last did Panto here at Greenwich - our award-winning *Sleeping Beauty*, which was created to celebrate the 50th anniversary of Greenwich Theatre's reopening. And then, ironically, due to the pandemic, the theatre was forced to close - so, like *Sleeping Beauty*, the annual Greenwich Panto went to sleep, though thankfully for only a year rather than one-hundred!

Bringing back our Panto has faced its challenges - not least, financial. Many theatres rely on the revenue from Panto to help them run for the rest of the year and Greenwich is no exception, so with our budget a little tighter, we put our heads together to come up with ingenious ways to still present our high-octane panto. And while the presentation is a little different this year, it's still packed with all the things you know and love from a Greenwich Pantomime - including Uncle Steve and the band!

*The Queen of Hearts* is this year's Panto title. One of the great things about creating Panto at Greenwich is that every now and then, I'm allowed to revive a Panto story that is rarely done. *The Queen of Hearts* is a prime example. Because our staging is somewhat different this year, I wanted to present a story that suited the new style

and that also had few pre-conceptions. I also love the fact that we are able to be part of Panto history by reviving some of these forgotten titles.

*The Queen of Hearts* Pantomime was presented quite often between the late 1800's and into the 1950's but then, like most panto's based on nursery rhymes, seemed to fade away. It is a simple story concerning the eponymous Queen of Hearts and her famous tarts! I've adapted the original Panto story to suit our style and needs. For some reason, I've always loved playing cards. They are a familiar part of our lives but, to me, are quite mysterious and visually intriguing and it was the visual elements that initially grabbed my imagination - and subsequently the imagination of our designer, Cleo Pettitt. Playing cards have, of course, been the inspiration for many stories - not least, *Alice In Wonderland*. In our tale, the Queen is far removed from the gruff ogre-like character presented by Lewis Carroll and our story has themes of finding the good in people, being resilient in the face of disaster, and spreading love! Themes that seem rather pertinent right now.

It's a joy to be doing Panto for you again (Oh, yes, it is!) and I can't wait to see you, our panto family, beaming back at us from your seats! Much love!



Greenwich Theatre's production of *Sleeping Beauty* in 2019



## Andrew Pollard

### *The Queen of Hearts*

Andrew is delighted to be back as writer, director and Dame in this, his 15th Panto at Greenwich.

In 2019 Andrew reprised his role as Phileas Fogg on Broadway and at the Asolo Rep, Florida in his fourth tour of *Around the World in 80 Days* (New Vic Theatre/Kenny Wax). His many other theatre credits include *Educating Rita* (Dukes Theatre/New Vic/Stephen Joseph), *Talent*, *Diane of Dobson's*, *The Ladykillers*, *Ghosts*, *Far from the Madding Crowd*, *Where Have I Been All My Life*, *Spring and Port Wine*, *The Admirable Crichton*, *The Rivals*, *Alphabetical Order and The Graduate* (New Vic Theatre), *To Sir With Love* (Birmingham Rep) *Life's A Drag* (Contact Theatre) *Medea*, *School for Scandal*, *Macbeth*, *King John and The Merry Wives* (Northern BroadSides), *Hay Fever*, *Sleeping Beauty*, *Babes in the Wood* and *Perfect Days* (Oldham Coliseum), *Arsenic and Old Lace*. *The Importance of Being Earnest*, *The Lonesome West* (Keswick Theatre by the Lake), *The Rivals* (Theatre Royal Bath), *A Night at the Bijou* (Natural Theatre), *Whose Dog Is It Anyway?* (JB Shorts), *Comedy of Errors* (Ludlow Shakespeare Festival), *Search Light Over Bemmy* (Tobacco Factory), *Cinderella* (Halifax Victoria), *Marat/Sade* (Bristol Old Vic), *The Picture of Dorian Gray* (International tour, American Drama Group), *Dick Whittington* (Theatre Royal Northampton), *A Taste of Honey* (Moffat Little Theatre Co).

**Television includes:** *Hollyoaks* (Lime Pictures),

*Trying Again* (Sky One/Avalon), *Coronation Street and Emmerdale* (ITV), *Coup* (Channel 4), *Jodie and Mary* (ITN) and *Spooks: Liberty* (BBC/Kudos Television).

Andrew has a great passion for British Pantomime and is resident Pantomime writer for Watford Palace Theatre, Queens Theatre Hornchurch and Mercury Theatre Colchester, as well as having written Pantomimes for Salisbury Playhouse, Lawrence Batley Theatre, Huddersfield and the Georgian Theatre Royal, Richmond and Godalming.

**Other writing includes:** For Northern BroadSides Theatre Company - *The Water Babies*, *Treasure Island and Heidi - A Goat's Tail* (nominated for 'Best Children's Play' in the T.M.A. Awards and the Adrienne Benham Award for Children's Theatre Writing).

For the Stephen Joseph theatre, Scarborough - *The Hunt for The Scroobious Pip* (based on the nonsense writings of Edward Lear), *The Nutcracker Prince*, *Cinderella*, *Beauty and the Beast* and *Aladdin*.

**Other works include:** *Cross Purposes* for Paines Plough/Bristol Old Vic And *Laughing Gravy* - a play about Stan Laurel for Zenith Theatre Company.

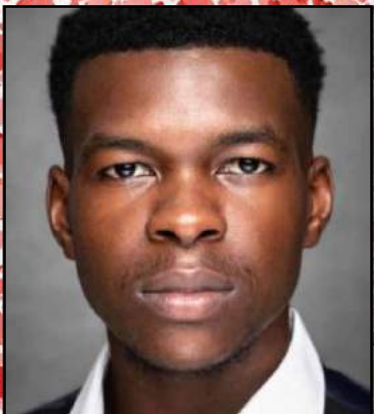
His sitcom, *Spinnin' it* was one of the winners of the HTV 'Search for a Sitcom' competition and subsequently broadcast.





## Anthony Spargo

*The King of Clubs*



## Gibsa Bah

*Jack - The Knave of Hearts*

Anthony Spargo graduated from The Webber Douglas Academy of Dramatic Art with honours. He made his West End debut in *Horrible Histories - Barmy Britain Part One* (Garrick Theatre). *Parts Two, Three and Four* (Apollo Theatre) followed each consecutive year. He has also toured internationally with *Horrible Histories* to Bahrain, Qatar, United Arab Emirates, Singapore, Hong Kong and Australia. Greenwich panto has seen him play the villainous roles of... *The Sheriff of Nottingham* in *Robin Hood*, *Abanazar* in *Aladdin*, *The Wolf in Red Riding Hood*, *Captain Hook* in *Peter Pan*, an *Ugly Sister* in *Cinderella*, *Gingerbeard* in *Robinson Crusoe* and *Rasputin the mad monk* in *Sleeping Beauty*.

**Other credits for Greenwich Theatre include:** Gepetto in *Pinocchio* and Miss Slighcarp in *The Wolves Of Willoughby Chase*.

**Other theatre credits include:** schizophrenic ventriloquist *Albert Frog* in *The Vaudevillains* (Charing Cross Theatre), *Salvador Dali* in *Hysteria* (The English Theatre of Frankfurt), *Samedi* in *The Infant* and *Ernest* in *Ernest and the Pale Moon* (National Tours). Anthony played *The Tin Man* in BBC1's *Over the Rainbow* and was a Dalek in three series of *Doctor Who*! He has co-written various theatre productions for Les Enfants Terribles theatre company: Festival and touring shows include; *Anyone for Tea*, *The Marvellous Imaginary Menagerie*, *The Time Portal* and *The Fantastical Flying Exploratory Laboratory*. With Les Enfants and EBP he has co-written; *Interactive Sherlock Holmes experience - The Game's Afoot for Madame Tussaud's*, an immersive dining experience – *Roald Dahl's Dinner at the Twits* along with - *Adventures in Wonderland* and the Olivier nominated *Alice's Adventures Underground*. Anthony has also written and starred in numerous short films including *Lenny Beige: Legend to Legend with Liam Gallagher*, *Gregory Humphreys Presents a complete History of Britain*, *Pleased to Eat You* and *A Woodcutters Tale*.

Gibsa Bah is currently in his final year of training at Associated studios where he's studying Musical Theatre Performance. He previously trained at WAC Arts on the diploma course. Gibsa is thoroughly looking forward to making his professional debut at Greenwich Theatre this festive season. He'd like to thank his agent and the team on this project for being so joyful and supportive! His credits whilst training include: Bernardo in *West Side Story* (The Birmingham Hippodrome); Spencer in *Boogie Nights* (The Alexander Theatre); Kevin in *In the Heights* (the Playground Theatre); Tyrone in *Fame* (the Birmingham Old Rep); Emmo in *Our House* (the Birmingham Old Rep); Ensemble in *Threepenny Opera* (city lit).



## Myla Carmen

*The Princess of Diamonds*



## Emma Jay Thomas

*The Prince of Spades*

Myla Carmen has recently appeared in National Youth Music Theatre's production of *Billy the Kid* playing *Annabelle Wade* (2021) and ensemble in *Parade* (2019). They have also completed five seasons with British Youth Music Theater, latest being *Fight Like a Girl* playing *Zoe Jinks* (2019). Myla graduated from Italia Conti in July 2021, where they played *Lisa Hopkins* in *Made in Dagenham* and *Kathy* in *9 to 5* for the third year shows. Myla is very excited to be making their professional debut in the cast of *The Queen of Hearts*!

Emma Jay Thomas trained at University College London and Mountview Theatre School.

**Credits include:** Cleo/Stuzzi/Emily Greenleaf in *The Talented Mr. Ripley* (Faction Theatre Company; Wilton's Music Hall, Vaults Festival and tour); *Demon Queen* in *Mother Goose* (Millfield Theatre); *Goddess u/s Miranda* in *The Tempest* and *Iras u/s Octavia/Charmian* for The Royal Shakespeare Company. Original company of *Mamma Mia!* (Prince Edward Theatre); *Mimi and Gigi u/s Ellen* in *Miss Saigon* (Drury Lane and Tour); *Godspell* (Tour); *King Cotton* (The Lowry); *Meg in Merrily We Roll Along* (Donmar Warehouse and Queens Theatre); *Sarah* in *Ragtime* (Piccadilly Theatre); *The Girl in Blues in the Night* (Birmingham Rep) and *Charlene* in *Ain't Misbehavin'* (Harrogate Theatre); *Alexi Darling u/s Mimi* in *Rent* (Olympia Theatre Dublin); *Maid Marion* in *Robin Hood* and *Suzie Dean* in *The Good Companions* (New Wolsey Theatre, Ipswich); *Princess Jasmin* in *Sinbad* (Warwick Arts Centre); *Beauty* in *Beauty and The Beast*, *Hebe* in *HMS Pinafore* and *Kate* in *The Pirates of Penzance* (New Victoria Theatre, Stoke); *Virtue* in *Mother Goose* (Oxford Playhouse); *Ronnette* in *Little Shop of Horrors* (English Theatre, Frankfurt) and *Princess So-Shy* in *Aladdin* written by Andrew Pollard (Greenwich Theatre). TV, Film and radio credits include *The Obstetrician* in *Holby City* for the BBC, short film *The Fantastical Millepede*, *Isabel* in Josh Howie's *Losing it* for BBC Radio 4 and *Dr. Stephanie Thrower* in *Star Cops* for Big Finish Audio.



# THE BAND



**“Uncle” Steve  
Marwick**  
*Musical Director, Piano  
and The Lord High  
Ace of the Palace*

Steve is delighted to be back at Greenwich Theatre for his fifteenth Panto! He divides his time between working as a musical director and a composer/songwriter. As a composer he was awarded The Vivian Ellis Prize for Musicals for Mesmer, his song *As Long As* was recorded by Shakin’ Stevens and he composed the score for *The Secret Garden*. With book and lyrics by Diana Morgan, it has had many productions - most notably a Polish production which is now in its twenty first year at the Teatr Bagatela, Krakow. At Polka Theatre for Children he has written songs and music for many shows including *Three Cheers for Mrs. Butler*, *Dinosaur Rock!*, *The House at Pooh Corner* and *Friendly Matches* as well as music for Jaqueline Wilson’s *Double Act*, *Bad Girls*, *Midnight*, *The Suitcase Kid* and *Secrets*.

**Other music for theatre includes:** *The Restitible Rise of Arturo Ui*, *Mother Courage, Fear and Misery in the Third Reich* and *The Good Soul of Schezuan* all at Watford Palace Theatre. At the Queen’s Theatre, Hornchurch he wrote songs and music for *Peter Pan*, *Hansel and Gretel*, *Treasure Island*, *The Great Gatsby*, *Little Red Riding Hood*, *The Elephant Man*. And his musical based on *Little Lord Fauntleroy* (Maly Lord) was premiered at the Krakowski Opera House, Krakow in 2011.

**Other work includes:** choir arrangements for Ray Davies and Oasis as well as solo Noel Gallagher concerts at the Royal Albert Hall in aid of Teenage Cancer Trust. His choral arrangements can be heard on Ray Davies’s *The Kinks Choral Collection* and on Noel Gallagher’s *High Flying Birds*. Earlier this year, as we came out of the lockdown, Steve was so pleased to write the songs and music for *The Other Side Of The Street* - a new musical specially written for St Augustine’s School, Kilburn and commissioned by Mousetrap Theatre Projects.



**Chris  
Wyles**  
*Drums*

Chris Wyles has worked with many artists as a drummer and recording engineer/producer. Drumming credits include his first signed band *No Dice*, who released two albums and toured extensively in the UK, Europe and America. He’s toured and recorded with artists such as *Red Box*, *Black Box Recorder*, *The Auteurs*, *Billie Joe Spears*, *Bo Diddley*, *Gwen Guthrie*, *Kirsty McColl*, *Tracey Ullman*, *Zoot Money*. In his own studio Chris has recorded artists such as *Placebo*, *Elastica*, *Snow Patrol*, *Bananarama*, *James Blunt*, *Samantha Mumba*, *Lulu* and the grammy award winning mexican band *Zoe*.

**Theatre credits include:** *Dame Edna Everage* and *Blues Brothers*, and he was the drummer for *Shakin’ Stevens* for some time and featured on the Xmas hit *Merry Christmas Everyone*. This will be Chris’s 15th panto at Greenwich Theatre.



**Gordon  
Parish**  
*Guitar*

Gordon Parrish is a freelance guitarist who has been a part of the Greenwich pantomime since 2015. As a session player he has toured all over Europe with various acts, performed with many high end tribute bands, toured as a headliner act for Royal Caribbean, and worked with artists such as Will Young.



## Cast

*The Queen of Hearts*  
**ANDREW POLLARD**

*The King of Clubs*  
**ANTHONY SPARGO**

*Jack - The Knave of Hearts*  
**GIBSA BAH**

*The Princess of Diamonds*  
**MYLA CARMEN**

*Prince of Spades*  
**EMMA J THOMAS**

*The Lord "High Ace"  
of the Palace (Uncle Steve)*  
**STEVE MARWICK**

*Understudy Jack, Princess, Prince*  
**HEATHER KIRK**

## The Band

*Piano*  
**STEVE MARKWICK**

*Drums*  
**CHRIS WYLES**

*Guitar*  
**GORDON PARISH**

## For Greenwich Theatre

*Set Builders*  
**GEM STAGE**  
**JESSICA PERKINS**

*Poster Design by*  
**DRAGONFLY**

*Programme Design by*  
**KOKO CREATIVE**

*Technical Services*  
**ADRIAN HAMPTON**  
**PRACTICALLY PERFECT**

*With thanks to the ROYAL NATIONAL THEATRE*

*Produced by*  
**JAMES HADDRELL & SIMON FRANCIS**  
**ON BEHALF OF**  
**GREENWICH THEATRE**

## Creative Team

*Writer and Director*  
**ANDREW POLLARD**

*Musical Director*  
**STEVE MARKWICK**

*Designer*  
**CLEO PETTITT**

*Costume and Wardrobe Supervisor*  
**SADES ROBINSON**

*Lighting Designers*  
**MARK DYMCK**

*Sound Designer*  
**MICHAEL WOODS**

*Choreographer*  
**LUCY ANDIC**

*Assistant Designer*  
**LAUREN CONNOLLY**

*Assistant to the Director*  
**HEATHER KIRK**

## Production Team

*Production Manager*  
**CAZ HAMPTON**

*Company Stage Manager*  
**BILL WILLDEN**

*Deputy Stage Manager*  
**PIP SNOW**

*Assistant Stage Manager*  
**MYAH MORRIS-DRAKE**

*LX Operator*  
**RICKY BRENT**

*Sound No.1*  
**MATTHEW GILES**

*Wardrobe Manager*  
**LI-LEE CHOO**

*Stage Crew*  
**ELION BUDDEN**

*Costume Makers*  
**SADES ROBINSON,**  
**LAUREN BUTLER, ALICE KEAL,**  
**PHILLY NOONE, JULIA SANDERS,**  
**TILLY TAMBINI COOPER,**  
**ELION BUDDEN**

*Headdress Maker*  
**ALLEMAAL TEJATER**



# THE CREATIVE TEAM

## Cleo Pettitt Designer

**Training:** B.A. (hons) Theatre Design and M.A. Scenography, U.C.E. Birmingham; Linbury Prize for Stage Design finalist, 1997; nominated for Best Set Design, 2017 and 2019 (Great British Panto Awards).

Cleo loves designing the pantos at Greenwich Theatre and has also done many others, including Watford Palace, Belgrade Coventry, Palace Theatre Westcliff, The Brewhouse Theatre in Taunton and this year the Hackney Empire.

**Other shows:** in Bermuda, *Mamma Mia!*, *The Pirates of Penzance*, *South Pacific*, *The Producers*, *Jesus Christ Superstar*, *Oliver!*, *The Best Little Whorehouse in Texas*, *Into the Woods*, *Dreamgirls*, *Cabaret*, *Beauty and the Beast*. *The Full Monty*, *Ragtime*, *The History Boys* and *Fiddler on the Roof*.

**In Dubai:** *Fame*, *Blood Brothers*, *Woman in Black*, *Annie*, *High School Musical (1 and 2)*, *Abigail's Party*, *Don't Dress For Dinner*, *Dial M for Murder* and *The Sound of Music* (Time Out Award: Best Musical, transferred to Bahrain and Qatar).

In Canada, the opening two seasons for the Montgomery Theatre, Prince Edward Island, with works from Wilde to Coward and Shaw.

**Opera:** *The Marriage of Figaro*, Lyric, Hammersmith; *Così fan Tutte*, *Tosca*, Christs Hospital, Horsham; *Simon Boccanegra*, *The Merry Widow*, Bloomsbury Theatre; *Don Giovanni*, *Heaven*, Charring Cross. For Anchorage Opera, Alaska, *The Magic Flute*, *The Sound of Music* and *The Pirates of Penzance*.

**Other work includes:** *Bad Days and Odd Nights* - Caryl Churchill plays, Greenwich Theatre; *The Giles Family musical*, New Wolsey Theatre, Ipswich; *Dracula*, Cheltenham Everyman/national tour (costumes); *A Christmas Carol*, Players Theatre, New York; *Missing Persons*, Trafalgar Studios, London; *Art*, Theatre Royal, Bury St. Edmunds; *Ladies Cage*, Royal Exchange Studio, Manchester; *Macbeth*, *Robin Hood*, *The Snow Queen*, Creation Theatre, Oxford; *Around the World in Eighty Days*, Liverpool Playhouse, *The Caucasian Chalk Circle*, Cyclops', The Scoop, South Bank; *Company*, Palace Theatre, Westcliff; *Swollen Tongues*, National Tour; *Trust Byron*, Gate Theatre and Tour; *Joyisms*, Looking Glass Theatre, New York

## Lauren Connolly Assistant Designer

Lauren Connolly is a Set and Costume Designer for performance. She trained in Theatre Design at Nottingham Trent University where she was the recipient of the Birmingham Opera Award. She has since designed nationally for touring, immersive, and community productions across drama, dance, carnival, festivals, and short film.

**Design credits include:** *Buffering...* (Watford Palace Theatre), *Were You There?* (Hat Factory Arts Centre), *Capulets and Candyfloss* (The Royal Shakespeare Company), *Riot Act* (Luton Town Hall), *Neville The Squirrel* (Stockwood Discovery Centre), *Laced Within Our Borders* (The Bear Club), *The Eden Effect* (Camden People's Theatre), *Imagine Luton* (Watford Palace Theatre), *Rise of the Shadow Stealers* (Carriageworks Leeds), *Oedipus The King* (Lakeside Arts Nottingham). In 2021 she worked as the Associate Designer for *The Stage In The Park* (Watford Palace Theatre). As Assistant, Lauren has created designs, scale modelboxes, and AutoCAD drawings for shows including: *Seedling* (Carbon Theatre), *The Enchanted Island* (British Youth Opera), *Wake* (Birmingham Opera Company), *Orient Flux* (Kennedy London), *Les Dialogues Des Carmelites* (RNMC), *In The Night Garden Live and Bing! Live* (Minor Entertainment UK Tour), *The Magic Flute* (Macerata Opera Festival), *Eugenius! The Musical* (The Other Palace), *Pygmalion* (English Theatre Frankfurt), *A Teenage Opera* (British Youth Music Theatre). [www.laurenconnolly.co.uk](http://www.laurenconnolly.co.uk)

## Lucy Andic Choreographer

Lucy Andic trained at Bird College and graduated with a First Class BA Hons.

**Theatre credits include:** *Cover Anytime Annie* / *Ensemble in 42nd Street* (Theatre Royal Drury Lane), *Dance Captain in Sleeping Beauty Pantomime* (Greenwich Theatre), *Princess Jasmine in Aladdin Pantomime* (Alton Towers Theatre).

**Other Credits include:** *42nd Street Film 2018*, *Olivier Awards 2018*, *The Gatsby Girls*, *Splinters – The Last Skeptik ft. Caragh Campbell music video*, *The One Show*. Over the 2021 Christmas period, Lucy will be appearing as Prince Charming in the *Cinderella* Pantomime (New Theatre Royal, Portsmouth).

## Mark Dymock Lighting Designer

Mark Dymock is delighted to be lighting his first panto at Greenwich after lighting *Pinocchio* and *Wolves of Willoughby Chase* this summer.

**Credits include:** *Once the Musical* (First National Tour), *One Man Two Guvnors*, *Grandma Saves The Day*, *Kiss Me Quickstep*, *Once, Rope* (New Wolsey); *The Wisdom Club*, (Theatre Royal BSE); *Soldier On* (The Other Palace and Canadian Stage); *Ken* (Terry Johnson, Hampstead); *Revenants* (Pleasance, Kenwright); *Macbeth*, *All's Well That Ends Well*, *Measure for Measure*, *Alice In Wonderland*, *Loves Labours Lost* (GSC); *Dell Computers Gala* (Buenos Aires); *Love Letters*, *Kiss Me Quickstep*, *Haunting Julia*, *Roll Over Beethoven*, *Don't Look Now* (OFFIE nominated for Best Lighting Design), *Return to the Forbidden Planet*, *Godspell*, *The Merchant Of Venice*, *Can't Pay? Won't Pay!*, *They're Playing Our Song*, *Jack And The Beanstalk*, *Cinderella*, *Ladies Down Under*, *The Woman Who Cooked Her Husband* (Queen's Theatre); *Cathy* (Soho Theatre); *East* (Brighton Theatre Royal and Festival); *Sleeping Beauty*, *Aladdin* (Evolution); *Northanger Abbey* (Bury St Edmunds Theatre Royal Tour); *Clybourne Park* (Regional premiere tour); *Return to the Forbidden Planet* (25th Anniversary Tour); *Cathy* (Cardboard Citizens tour); *Betty Blue Eyes* (Regional premiere tour); *Michael Morpurgo's Butterfly Lion* (Kenwright, National Tour); *Snow White*, *Peter Pan*, *Wind in the Willows*, *James and the Giant Peach*, *Noises Off*, *Friend or Foe*, *The History Boys*, *The Hired Man* (Mercury Theatre); *House and Garden*, *Alice in Wonderland*, *Peter Pan*, *Pinocchio*, *Arabian Nights*, *Treasure Island*, *Wind in the Willows* (Watermill); *Meena and the Masala Queens*, *The Deranged Marriage*, *Mummy! Presents*, *Break The Floorboards and Happy Birthday Sunita* (Rifco and Watford Palace); *Walking the Chains* (Bristol Temple Meads Passenger Shed); *The Full Monty*, *Best Little Whorehouse in Texas*, *Oliver!* (Bermuda City Hall); working with Willy Russell on *Educating Rita*, *Breezeblock Park* (Liverpool Playhouse); *Shirley Valentine* (Royal Court Liverpool); *Farm Boy*, *The Hired Man*, *Kissing Sid James* (New York E59).

## Michael Woods Sound Designer

Michael Woods is pleased to be back at Greenwich Theatre for his sixth panto.

He trained at Guildhall School of Music and Drama and now works as a sound designer, engineer and operator. In 2020 Michael received an Offie nomination for best sound design for *The Curious Case of Benjamin Button* which premiered at Southwark Playhouse in the spring of 2019. Michael is also a keen musician and enjoys a good sing.

**Sound Design credits include:** *Ever Young* (POSK Theatre); *Sleeping Beauty* (Greenwich Theatre); *The Wave and (This Isn't) A True Story* (Almeida Young Company at The Rose Lipman Building); *Robinson Crusoe* (Greenwich Theatre); *Cinderella* (Greenwich Theatre); *Our Lovely Ugly City* (Almeida Theatre); *Rejsen* (Teater Nordkraft, Denmark); *The Dark Tower* (CLF Art Cafe); *Hamlet* (Riverside Studios).

**Associate Sound Design credits:** *Hymn* (Almeida Theatre); *Love, Loss and Chianti* (Riverside Studios).

**Production Sound Engineer credits include:** *White Noise* (Bridge Theatre); *Tunisia* (Almeida Theatre); *Bach and Sons* (Bridge Theatre); *Six Artists* (Almeida Theatre); *Nine Lessons and Carols* (Almeida Theatre); *Albion* (Almeida Theatre); *Death of a Salesman* (Piccadilly Theatre); *Vassa* (Almeida Theatre); *The Wild Duck* (Almeida Theatre).

**Sound Operator credits include:** *A Christmas Carol* (Bridge Theatre); *All About Eve* (Noël Coward Theatre); *Wasted* (Southwark Playhouse); *Machinal* (Almeida Theatre); *Mood Music* (The Old Vic); *Fanny and Alexander* (The Old Vic); *Our Great Tchaikovsky* (The Other Palace); *Ink* (Almeida Theatre); *Peter Pan* (Greenwich Theatre); *The Pianist of Willesden Lane* (The Other Palace); *The Donkey Show* (Proud, Camden); *The Buskers Opera* (Park Theatre); *Red Riding Hood* (Greenwich Theatre); *Pure Imagination* (St James Theatre); *Songs For A New World* (St James Theatre).

## Heather Kirk Assistant to the Director and Understudy

Heather Kirk trained in musical theatre at The ICMT London, before going on to gain her First-Class BA (Hons) Theatre Degree from Guildford School of Acting. She is an emerging creative and is grateful to Andy and the Greenwich Pantomime team for supporting her journey into directing! Heather also recently co-produced her first short film, which is currently screening at film festivals internationally.

**Performance credits include:** Since graduating - Guest singer for *Parts I'll Never Play* (The Other Palace) and *Finale* with Laura Pitt-Pulford (Boulevard Theatre Soho). She originated the lead role of Elvi in *Ideology and Hair Gel* (Edinburgh Fringe Festival) and was most recently Swing for Stiles and Drewe's *The Three Little Pigs* (The Turbine Theatre, Underbelly London and Tour). As a child - *Cat on a Hot Tin Roof* (Nottingham Playhouse) and *Joseph and the Amazing Technicolor Dreamcoat* (UK Tour).



# GREENWICH THEATRE THE HISTORY

Greenwich Theatre has held a place at the heart of the local community for over 160 years. From Victorian Music Hall, Palace of Varieties, a spell as a cinema and finally a successful theatre. Greenwich Council bought the site for demolition in 1962 but agreed to support the idea of a new theatre if there was enough local enthusiasm to justify it. Ewan Hooper, a local actor and director, accepted the challenge of rallying support and it is notable that half the cost of the new theatre came from local individuals and businesses.

## 1969 and a New Start

In 1969 the theatre re-opened with Martin Luther King – a new piece of musical theatre written by Ewan Hooper. Over the next 28 years, Greenwich Theatre produced a body of work of astonishing quality and variety under the artistic directorship first of Ewan Hooper and subsequently of Alan Strachan, Sue Dunderdale and Matthew Francis. After a period of closure in the late 90s, the theatre once again reopened in 1999 under the directorship of Hilary Strong, bringing a change of approach and a renewed focus on musical theatre with a string of acclaimed productions including the London revival of the Charles Strouse musical *Golden Boy* and the world premiere of Paul Ryan and Peter Readman's *Sadly Solo* Joe starring Clive Rowe.

## Greenwich Theatre Today

In 2007 James Haddrell became director of Greenwich Theatre. During the following years the theatre has transformed into a powerhouse of new and emerging theatre makers, a national champion for family and children's theatre, and an award-winning international producer and collaborator. With twenty young artists and theatre companies now supported throughout the year with everything from office and rehearsal space to mentoring and production support, Greenwich Theatre is now having a major impact on the emergence of new work across the country. We have retained our audiences and increased our activity year on year despite reductions in funding and increased financial threats to the many touring companies that regularly present their work here. Many of this country's most important emerging theatre companies consider Greenwich to be their home, and barely a day goes by without rehearsals, auditions, workshops or writing sessions happening here at the theatre.

## Looking To The Future

In 2021 a small team of dedicated staff supported by generations of volunteers, donors and supporters is celebrating making it through the pandemic; a period of time which shook the arts industry and in particular the theatre industry to its core. Recognised annually as one of the best in the country and following our **Best Pantomime Offie Award** win in 2019, the Greenwich Theatre pantomime is even more special this year as it signifies us boldly overcoming numerous astonishing challenges that were presented to us over the past year. Unable to stage our usual seasonal show due to the lockdown in 2020, a tradition that had been running for over 20 years, we are ecstatic to be making our festive comeback with a version of the rarely staged traditional pantomime *The Queen of Hearts*. We look forward to many more years of bringing people together to celebrate performance and would like to thank our loyal audiences for their continued support. If you would like to help secure the future of Greenwich Theatre further, do consider becoming a Friend of Greenwich Theatre or inscribing a message onto one of our "buy a brick" tablets.

# GREENWICH STAFF

**GREENWICH  
THEATRE LONDON**

**ARTISTIC DIRECTOR**  
James Haddrell

**EXECUTIVE DIRECTOR**  
Simon Francis

**MARKETING MANAGER**  
Lucie Morgado

**FRONT OF HOUSE MANAGER**  
Catherine Nolan

**ADMINISTRATOR AND  
PROJECTS MANAGER**  
Brad Tutt

**FINANCE OFFICER**  
Tom Kemp

**TECHNICAL MANAGER**  
Caz Hampton

**RESIDENT TECHNICIAN**  
Ricky Brent

**DIGITAL COMMUNICATIONS OFFICER**  
Jennifer G. Robinson P.T.

**BOARD OF TRUSTEES**  
Rita Beckwith  
Ian Brown  
Lucy Cuthbertson  
Cllr Nigel Fletcher  
Gerald Lidstone  
Cllr David Stanley  
Angela Clerkin  
Sophie Hamlet

**PATRONS**  
Dame Helen Mirren  
Lucy Bailey  
Ail Smith

**GREENWICH ANGEL SUPPORTERS**  
Arnold Lord, Guardian Angel

Greenwich Theatre is supported by a dedicated team of volunteers, Box Office and Front of House Staff.

**ADMIN 020 8858 4447**  
**BOX OFFICE 020 8858 7755**  
[info@greenwichtheatre.org.uk](mailto:info@greenwichtheatre.org.uk)  
[www.greenwichtheatre.org.uk](http://www.greenwichtheatre.org.uk)



/GreenwichTheatreLondon



@greenwichtheatr



@greenwichtheatre



# COMING TO GREENWICH THEATRE

## AS PART OF KIDS WEEK

### APRIL 2022



all  
stories



# THE GRUFFALO

BASED ON THE PICTURE BOOK BY  
**JULIA DONALDSON** AND **AXEL SCHEFFLER**

★★★★★  
'IRRESISTIBLY  
CHARMING'  
The Sunday Times

★★★★★  
'AN ABSOLUTE  
DELIGHT'  
Scotsman

LIVE  
ON  
STAGE



An independent day  
school for girls and boys  
aged 3-18

Contact  
admissions@colfes.com  
to visit

www.colfes.com



# MERRY CHRISTMAS FROM GREENWICH MARKET



Shop  
unique,  
handmade  
Christmas  
gift ideas!



Lush Designs



Mama Little's Rum Cake

ARTS | CRAFTS | VINTAGE | STREET FOOD

Nearest Station DLR Cutty Sark

#greenwichmarket

www.greenwichmarket.london

CREATIVITY  
IN EVERY  
CORNER



# COMING SOON TO GREENWICH THEATRE...



**NOTFLIX**  
Sat 15 Jan

Splendid Productions presents

**UBU**

Tue 18 Jan



Mark Farrelly returns in

**JARMAN**

Mon 31 Jan



## THE STORY OF THE YARA

A new theatre concept  
presented by JIH Productions,  
fusing live performance, radio and  
illustration - available now at

[greenwichtheatre.org.uk](http://greenwichtheatre.org.uk)



020 8858 7755